

Sabroe chiller plant controller

Integrated solution for managing and monitoring the controls equipment in chiller plants

The Sabroe chiller plant controller is a compact, easy-to-install control panel that contains a pre-programmed PLC system and touch panel for monitoring and controlling a wide range of external equipment that is not part of the chiller itself, but that serves the chilled-water distribution system as well as other key equipment in the chiller plant.



Web



Remote access



Complete chiller plant

Advantages

Competitively priced control and monitoring solution

Know-how and experience from the market leader within industrial refrigeration and chilled-water systems combined into one single control box

Pre-vetted, documented and intelligently engineered solution, designed to fit the industrial refrigeration requirements

Comprehensive and well-thought-out user features.

Benefits

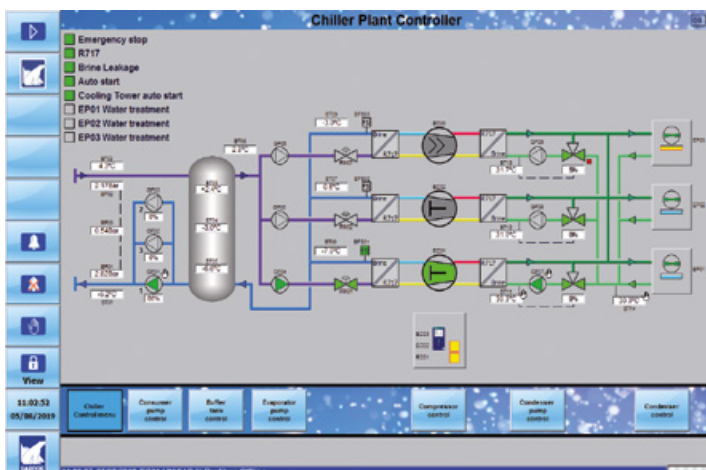
Easy to opt in for the Sabroe Chiller Plant Controller, which will save you additional shop-stops.

Ensures maximum efficiency and uptime of the complete chilled-water system.

Saves you a lot of time on electrical engineering, design, documentation, installation and commissioning.

Saves you valuable time in daily use and enables fully informed decisions.





Chillers are controlled by UniSAB

The chiller plant controller includes

- Differential pressure monitoring and control of pumps on the consumer side of the buffer tanks
 - Buffer tank temperature control function, with remote start/stop of chillers
 - Low-temperature protection of condenser circuit
 - Optimum condensing pressure control of condenser side, to match changing outdoor conditions
 - Monitoring of temperatures and pressures, and of the functioning of switches, motors and valves
 - Choice of direct or VSD drive control for each motor. VSD control can be by conventional digital/analog signals or by Profinet data communication with the VSDs
 - Remote monitoring and plant operation capability, via internet
 - Remote monitoring of connected UniSABs
- ... and much more.

The Sabroe chiller plant controller provides users with straightforward on-screen configuration of equipment throughout the chiller plant. You simply select the number and type of chillers, the type and number of condensers, the condenser control method and the distribution system design, including buffer tank option.

You also simply click on the number and functions of sensors, valves, pumps and fans.

Cross-check list for project alignment test is available on request.

Connectivity options

The chiller plant controller is available with a 3G/4G modem and VPN router for wireless internet connection.

The type and make of drive for pumps and for condenser fans are configurable. You can choose between conventional starter methods and VSD drive. The VSD drive option means you can use Danfoss and ABB VSD drives featuring Profinet connectivity and extended monitoring.

Control panel specifications

Cabinet	1200 x 800 x 300 mm (HxWxD) painted steel plate, IP44
Connectivity	Touch panel: Ethernet interface for remote monitoring and operation PLC: Ethernet/Profinet interface for software service and connectivity to VSDs
Main components	Main switch, 24V DC power supply, relays and terminals, Siemens S7-1500SP PLC and 12-inch Siemens Comfort touch panel

All information is subject to change without notice

Johnson Controls Denmark ApS
Sabroe Factory
 Christian X's Vej 201 · 8270 Højbjerg · Denmark
 Phone +45 87 36 70 00 · www.sabroe.com

